

Wafer Flanged Ball Valve

DIN PN 16 / ANSI150

Size DN 25– DN 100 Stainless Steel



Fig. 725000 FULL BORE Flanged Ends



Comercial de Válvulas y Accesorios, S.L.

Polígono Industrial Polizur, Calle Bosc Tancat, 6 Nave 2 y 3

08290 Cerdanyola del valles (Barcelona) – Spain Tel. 93 586 36 00 Fax 93 586 36 04

e-mail: info@cva.es

URL: www.jlx-valve.com



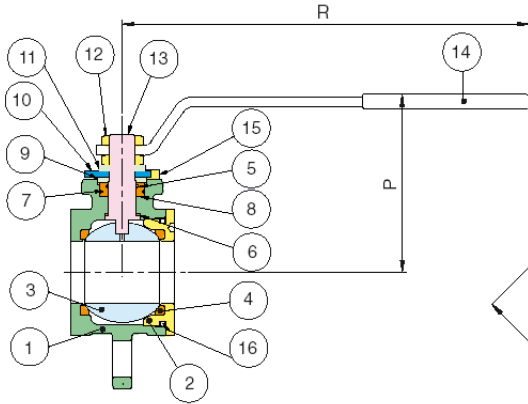
Remark: The dimensions of this catalogue are for reference only and it can change without previous notice.

Wafer Flanged Ball Valve

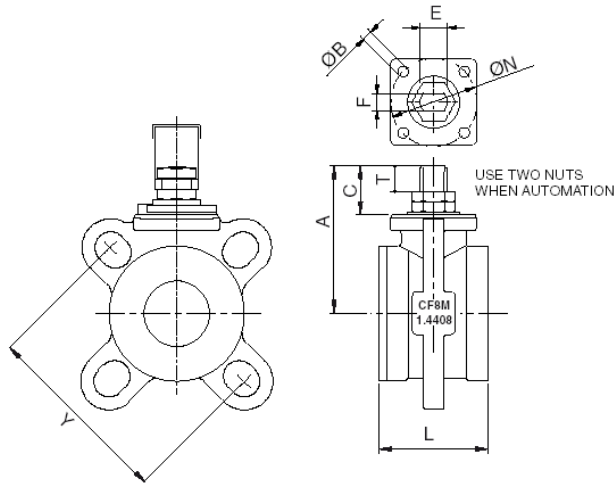
DIN PN 16 / ANSI150

Parts and materials

Limiti di temperatura: -20° +160° - Temperature range: -20° +160°



Item	Description	Material Fig. 725000
1	Body *	A351 - CF8M / A 182-F316
2	End connection	A351 - CF8M / A 182-F316
3	Ball	A351 - CF8M / A 182-F316
4	Ball seat	PTFE
5	O'Ring	FKM (VITON®)
6	Thrust Washer	PTFE
7	Ring	FKM (VITON®)
8	Stem seat	PTFE
9	Packing gland	A 182-F316
10	End stop	CARBON STEEL
11	Spring Washer	CARBON STEEL
12	Nut	CARBON STEEL
13	Stem	A 182 - F316
14	Handle	CARBON STEEL
15	Screw	CARBON STEEL
16	O'Ring	FKM (VITON®)



SIZE	DN	Y	L	R	P	A	C	T	E	F	ON	B	Kv	PN	Kg
1"	25	PN10 - PN16 - ANSI150	46	174	91	71,5	23	10,5	M12	8	42	M5	43	20	1,30
1 1/4"	32	PN10 - PN16 - ANSI150	54	174	95	75	23	10,5	M12	8	42	M5	89	20	1,65
1 1/2"	40	PN10 - PN16 - ANSI150	63,5	250	110	85	28	15	M16	10	50	M6	230	20	2,15
2"	50	PN10 - PN16 - ANSI150	82	250	119	93,5	28	15	M16	10	50	M6	265	20	3,75
2 1/2"	65	PN10 - PN16 - ANSI150	103	321	145	121,5	33,5	18	M20	14	70	M8	540	20	7,35
3"	80	PN10 - PN16 - ANSI150	122	321	154	131	33,5	18	M20	14	70	M8	873	20	10,30
4"	100	PN10 - PN16 - ANSI150	152	321	167	144	33,5	18	M20	14	70	M8	1390	20	16,00

(*Dimensions in mm



Comercial de Válvulas y Accesorios, S.L.
 Polígono Industrial Polizur, Calle Bosc Tancat, 6 Nave 2 y 3
 08290 Cerdanyola del valles (Barcelona) – Spain Tel. 93 586 36 00 Fax 93 586 36 04
 e-mail: info@cva.es

URL: www.jlx-valve.com

Remark: The dimensions of this catalogue are for reference only and it can change without previous notice.

Wafer Flanged Ball Valve

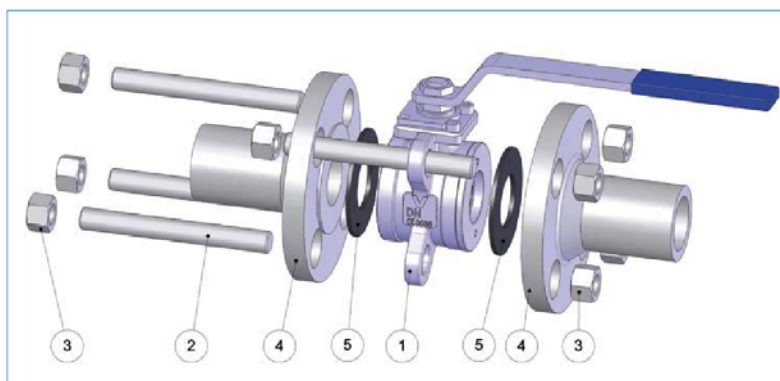
DIN PN 16 / ANSI150

Characteristics and Dimensions

Dimensions for Stud Bolts or screws assembling between flanges

SIZE	PN16			ANSI150		
	SCREW	STAY BOLT	N °	SCREW	STAY BOLT	N°
DN25	M12X100	M12X110	4	M14X100	M14X110	4
DN32	M16X110	M16X130	4	M14X100	M14X130	4
DN40	M16X120	M16X140	4	M14X130	M14X140	4
DN50	M16X140	M16X160	4	M18X140	M18X160	4
DN65	M16X160	M16X180	4/8	M18X170	M18X190	4
DN80	M16X180	M16X200	8	M16X190	M16X210	4
DN100	M16X210	M16X230	8	M18X220	M18X240	4

ASSEMBLING BETWEEN FLANGES LAYOUT



GENERAL CHARACTERISTICS	Serie 725
DESIGN STANDARDS	
Rating	PN 16 - ANSI 150 LBS
Nominal Diametre	From DN 15 to DN 100
Maneuver	90° rotation of the lever
Testing	100% tested
Operator	UNI 7070 handle with blue PVC cover

APPLICATION
Assembly in flanged rigid pipe system
Other specifications in the "Technical Specifications" catalogue
Nominal pressure (PN) in bar
For temperature > 80°C see diagram in the Technical Specifications catalogue
KV: flow coefficient in m³/h at differential pressure of 100 kPa
Vacuum: Maximum 10 ⁻³ torr.
Temperature range: -20°C +160°C
Direction of flow : both directions
We recommend the valve use in fully open or closed, not in mid position, and to manoeuvre the valve at least twice a year.



Comercial de Válvulas y Accesorios, S.L.
 Polígono Industrial Polizur, Calle Bosc Tancat, 6 Nave 2 y 3
 08290 Cerdanyola del valles (Barcelona) – Spain Tel. 93 586 36 00 Fax 93 586 36 04
 e-mail: info@cva.es

URL: www.jlx-valve.com

Remark: The dimensions of this catalogue are for reference only and it can change without previous notice.