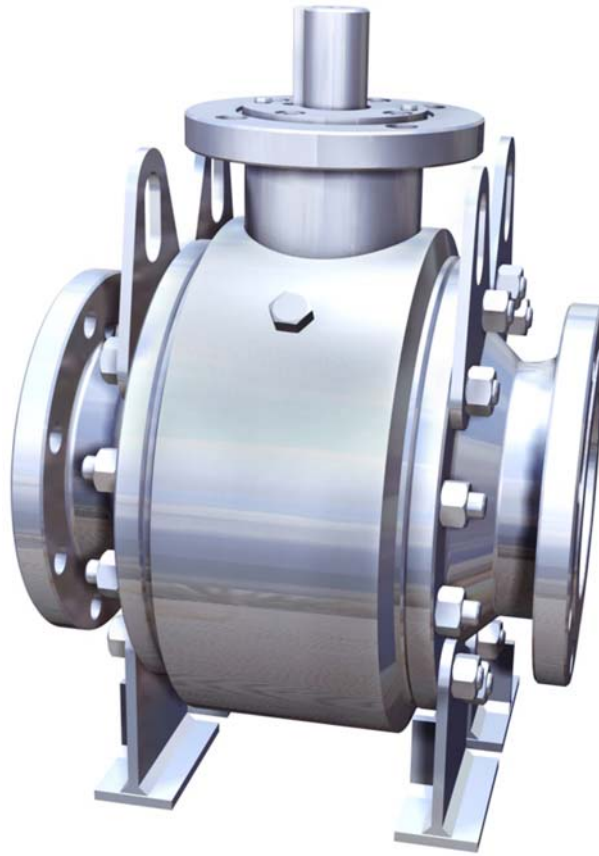


# Trunnion Ball Valves

PN 20/50/100  
Class 150/300/600  
Carbon Steel

---



## Fig. 6015 / 6030 / 6060

### API 6D and Fire Safe

Manufacturing program:



Ex II 2 G D c

LICENSE NO. 6D-0197

Quality & Environmental Management:



Comercial de Válvulas y Accesorios, S.L.  
Polígono Industrial Polizur, Calle Bosc Tancat, 6 Nave 2 y 3  
08290 Cerdanyola del valles ( Barcelona) – Spain Tel. 93 586 36 00 Fax 93 586 36 04  
e-mail: [info@cva.es](mailto:info@cva.es)  
URL: [www.cva.es](http://www.cva.es)

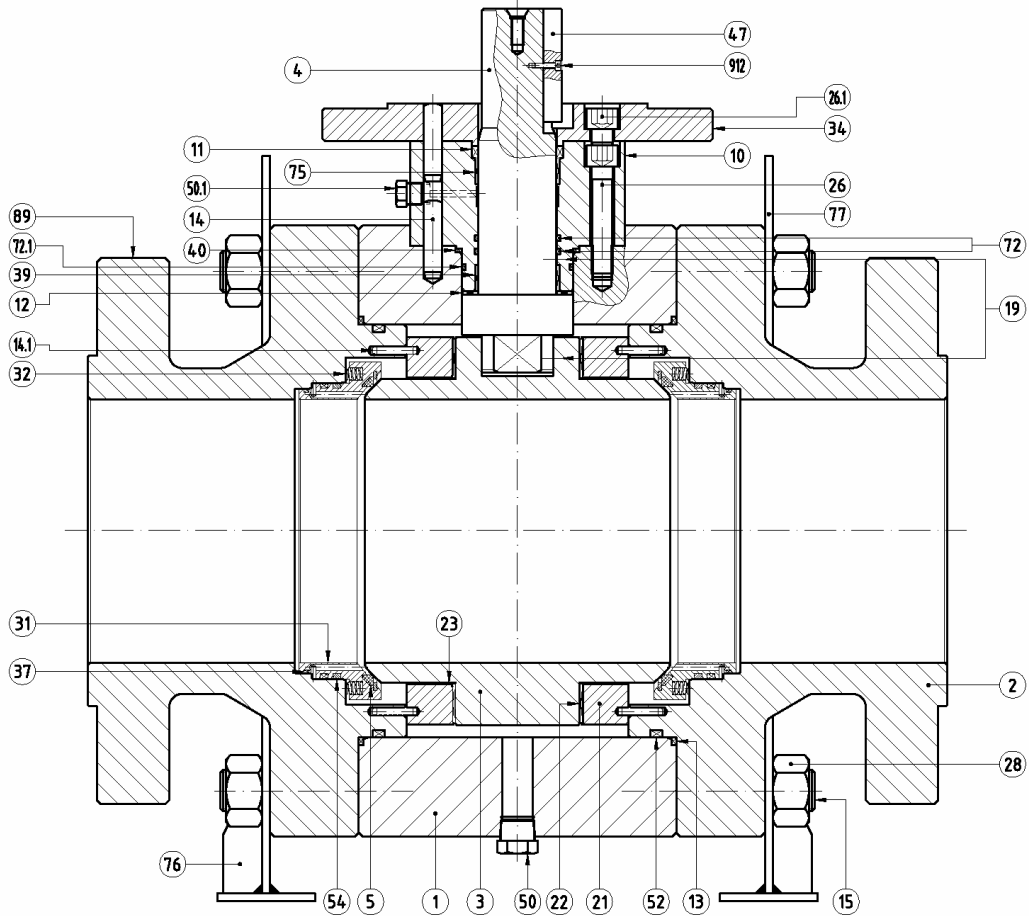
Nota: Las medidas del presente catalogo son orientativas y pueden variar sin previo aviso

SERIES  
STF

# Ball Valves PN 20/50/100 (Class 150/300/600)

## DN 50 - 500 (2" – 20")

### Parts and materials



ITEM	Description	Material
		AIT
1	Body	A 105N
2	Body Connector	A 105N
3	Ball	A 105N + E.N.P.
4	Stem	A 479 Tp.410
5	Seat Ring	RPTFE
10	Gland	A 105N
11	Gland Packing	Graphite
12	Stem Thrust Seal	25% G.F. + PTFE
13	Body Connector Seal	Graphite
14	Stop Pin	Carbon St.
14.1	Stop Pin	Carbon St.
15	Stud	A 193 Gr. B7M
19	Antistatic Device	Stainless St.
21	Ball Trunnion	A 105N + E.N.P.
22	Trunnion Bearing	AISI 316 w ith inside in PTFE
23	Bearing	PTFE
26	Bolt	DIN 912 12.9
26.1	Bolt	DIN 912 12.9
28	Nut	A 194 Gr. 2HM

ITEM	DESCRIPTION	MATERIAL
		AIT
31	Seat Carrier	A 105N + E.N.P.
32	Spring	Inconel - 750
33	Seat Seal	FKM
34	Upper Cap	A 105N
39	Stem Bushing	AISI 316 with inside in PTFE
40	Gasket	Graphite
47	Key	Carbon Steel
50	Drain Plug	Carbon Steel
50.1	Vent Plut	Carbon Steel
52	O Ring	FKM
54	Seat Carrier Seal	Graphite
72	O Ring	FKM
72.1	O Ring	FKM
75	Stem Bushing	AISI 316 with inside in PTFE
76	Support	Carbon Steel
77	Lug	Carbon Steel
89	Identification plate	Stainless St.
912	Bolt	DIN 912 8.8 Zinc plated



Comercial de Válvulas y Accesorios, S.L.  
 Polígono Industrial Polizur, Calle Bosc Tancat, 6 Nave 2 y 3  
 08290 Cerdanyola del valles ( Barcelona) – Spain Tel. 93 586 36 00 Fax 93 586 36 04  
 e-mail: [info@cva.es](mailto:info@cva.es)  
 URL: [www.cva.es](http://www.cva.es)

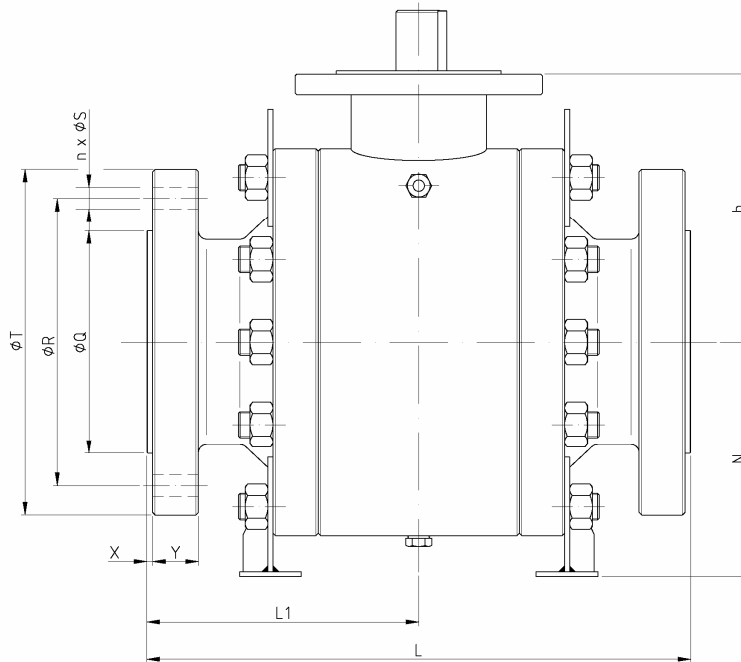
Nota: Las medidas del presente catalogo son orientativas y pueden variar sin previo aviso

**SERIES**  
**STF**

# Ball Valves PN 20/50/100 (Class 150/300/600)

## DN 50 - 500 (2" – 20")

### General Dimensions



#### Serie 6015 (Class 150)

DN	ØP	L	L1	ØQ	ØR	ØT	X	Y	n x ØS	h	N	Weight
50 (2")	49	178	89	92	121	150	2	14	4 x 19	125	120	52
80 (3")	76	203	102	127	152	190	2	18	4 x 19	150	170	59
100 (4")	102	229	115	157	191	230	2	22	8 x 19	175	200	110
150 (6")	152	394	197	216	241	280	2	24	8 x 22	269	254	171
200 (8")	203	457	229	270	299	345	2	27	8 x 22	325	285	334
250 (10")	254	533	267	324	362	405	2	29	12 x 25	362	366	458
300 (12")	305	610	305	381	432	485	2	30	12 x 25	423	428	736
350 (14")	337	686	343	413	476	535	2	33	12 x 29	455	448	1019
400 (16")	387	762	381	470	540	595	2	35	16 x 29	490	504	1778
450 (18")	438	864	432	533	578	635	2	38	16 x 32	542	568	1860
500 (20")	488	914	457	584	635	700	2	41	20 x 32	577	581	2439

Dimensions in mm and weight in Kg

#### Serie 6030 (Class 300)

DN	ØP	L	L1	ØQ	ØR	ØT	X	Y	n x ØS	h	N	Weight
50 (2")	49	216	108	92	127	165	2	21	8 x 19	125	120	60
80 (3")	76	283	142	127	168	210	2	27	8 x 22	150	170	72
100 (4")	102	305	153	157	200	255	2	30	8 x 22	175	200	120
150 (6")	152	403	202	216	270	320	2	35	12 x 22	269	254	195
200 (8")	203	502	251	270	330	380	2	40	12 x 25	325	285	352
250 (10")	254	568	284	324	387	445	2	46	16 x 29	362	366	534
300 (12")	305	648	324	381	451	520	2	49	16 x 32	423	428	847
350 (14")	337	762	381	413	514	585	2	52	20 x 32	455	448	1221
400 (16")	387	838	419	470	572	650	2	56	20 x 35	490	504	1831
450 (18")	438	914	457	533	629	710	2	59	24 x 35	542	568	2057
500 (20")	488	991	496	584	686	775	2	62	24 x 35	577	581	2721

Dimensions in mm and weight in Kg

#### Serie 6060 (Class 600)

DN	ØP	L	L1	ØQ	ØR	ØT	X	Y	n x ØS	h	N	Weight
50 (2")	49	292	146	92,1	127	165	7	25	8 x 19	125	120	63
80 (3")	76	356	178	127	168	210	7	32	8 x 22	150	170	78
100 (4")	102	432	216	157	216	275	7	38	8 x 25	175	200	132
150 (6")	152	559	280	216	292	355	7	48	12 x 29	269	254	262
200 (8")	203	660	330	270	349	420	7	56	12 x 32	325	285	490
250 (10")	254	787	394	324	432	510	7	64	16 x 35	362	366	728
300 (12")	305	838	419	381	489	560	7	67	20 x 35	423	428	1218
350 (14")	337	889	445	413	527	605	7	70	20 x 38	455	448	1374
400 (16")	387	991	496	470	603	685	7	76	20 x 41	490	504	2474
450 (18")	438	1092	546	533	654	745	7	83	20 x 44	542	568	2595
500 (20")	488	1194	597	584	724	815	7	89	24 x 44	577	581	3183

Dimensions in mm and weight in Kg



Comercial de Válvulas y Accesorios, S.L.  
 Polígono Industrial Polizur, Calle Bosc Tancat, 6 Nave 2 y 3  
 08290 Cerdanyola del valles ( Barcelona) – Spain Tel. 93 586 36 00 Fax 93 586 36 04  
 e-mail: [info@cva.es](mailto:info@cva.es)  
 URL: [www.cva.es](http://www.cva.es)

Nota: Las medidas del presente catalogo son orientativas y pueden variar sin previo aviso

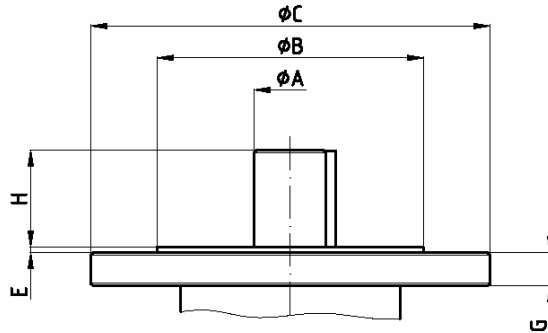
**SERIES**  
**STF**

# Ball Valves PN 20/50/100 (Class 150/300/600)

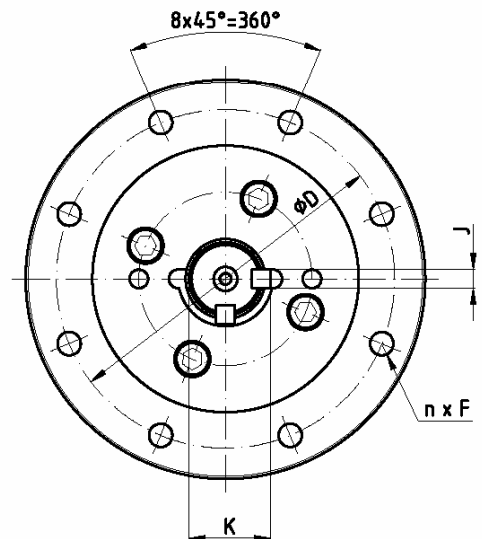
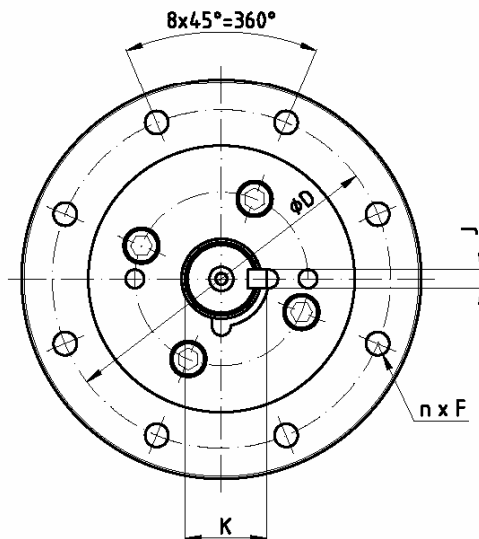
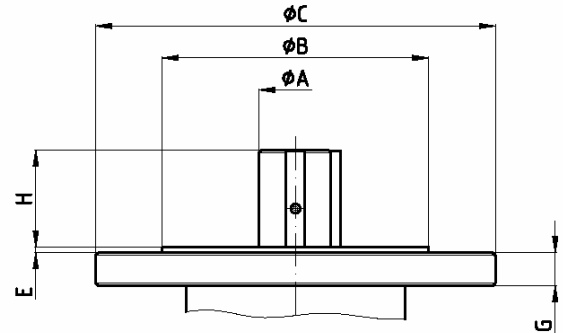
## DN 50 - 500 (2" – 20")

### Free Stem Dimensions

**DN-2" to 8"**



**DN-10" to 20"**



#### Actuator Connection

DN	ISO 5211	ØA	ØB	ØC	ØD	E	G	H	n x ØF	J	K
50 (2")	F10	20	70	125	102	3	10	45	4 x 12	6	22,5
80 (3")	F12	28	85	150	125	3	15	55	4 x 14	8	32
100 (4")	F12	31	85	150	125	3	15	62	4 x 14	10	36
150 (6")	F16	44,9	130	210	165	4	25	67	4 x 22	14	51,4
200 (8")	F25	54,9	200	300	254	4	25	73	8 x 18	14	61,4
250 (10")	F25	59,9	200	300	254	4	25	81	8 x 18	16	67
300 (12")	F25	69,9	200	300	254	4	25	100	8 x 18	18	78
350 (14")	F30	79,9	230	350	298	4	44	115	8 x 22	22	87,9
400 (16")	F30	84,9	230	350	298	4	44	130	8 x 22	22	94,9
450 (18")	F30	99,9	230	350	298	4	44	144	8 x 22	28	111,9
500 (20")	F30	99,9	230	350	298	4	44	144	8 x 22	28	111,9

Dimensions in mm and weight in Kg



Comercial de Válvulas y Accesorios, S.L.  
 Polígono Industrial Polizur, Calle Bosc Tancat, 6 Nave 2 y 3  
 08290 Cerdanyola del valles ( Barcelona) – Spain Tel. 93 586 36 00 Fax 93 586 36 04  
 e-mail: [info@cva.es](mailto:info@cva.es)  
 URL: [www.cva.es](http://www.cva.es)

Nota: Las medidas del presente catalogo son orientativas y pueden variar sin previo aviso

**SERIES**  
**STF**

# Ball Valves PN 20/50/100 (Class 150/300/600)

## DN 50 - 500 (2" – 20")

### General Characteristics

CARACTERÍSTICAS GENERALES	Fig. 6015 / 6030 / 6060 Serie <b>STF</b> Fig. 7015 / 7030 / 7060 Serie <b>STR</b>	Cuerpo 3 Piezas	Bola Guiada	Paso Total	Paso Reducido
<b>NORMAS DE DISEÑO</b>					
Diseño de la Válvula	API 6D	ASME B16.34	API 608	BS 5351	
Distancia entre caras	ASME B16.10	API 6D			
Bridas	ASME B16.5	ASME B16.47			
Brida Montaje Actuador	ISO 5211				
Marcaje	API 6D	BS 5351	NF E 29-470	CE - PED	EN 19
<b>PRUEBAS Y CERTIFICADOS</b>					
Aseguramiento de la calidad	ISO 9001	API Q1	CE - PED		
Certificación "Fire Safe"	BS 6755 Part 2	API 6FA	ISO 10497	API 607 4 <sup>TH</sup> Edition	
Pruebas a presión	API 598	BS 6755 Part 1	ISO 5208	NF E 29-203	EN 12266

### Torque Values in Nm

VALVE SIZE DN	AT DIFFERENTIAL PRESSURE			MAST
	Class 150	Class 300	Class 600	
	20 bar	50 bar	100 bar	
50 (2")	27	49	85	181
80 (3")	52	107	196	394
100 (4")	98	210	392	685
150 (6")	225	522	1.007	1.726
200 (8")	450	1.060	2.057	3.732
250 (10")	668	1.559	3.013	6.523
300 (12")	1.317	3.125	6.079	10.613
350 (14")	1.547	3.642	7.062	16.865
400 (16")	2.000	4.732	9.196	20.705
450 (18")	3.027	7.000	13.485	31.262
500 (20")	3.803	8.959	17.381	31.262

