

# Ball Valves PN 20/50 (Class 150/300) AIT & IIT Construction (Carbon & Stainless Steel)

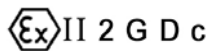
---



## Fig. 1515/1530

### API 6D and Fire Safe

Manufacturing program:



LICENSE NO. 6D-0197

Quality & Environmental Management:

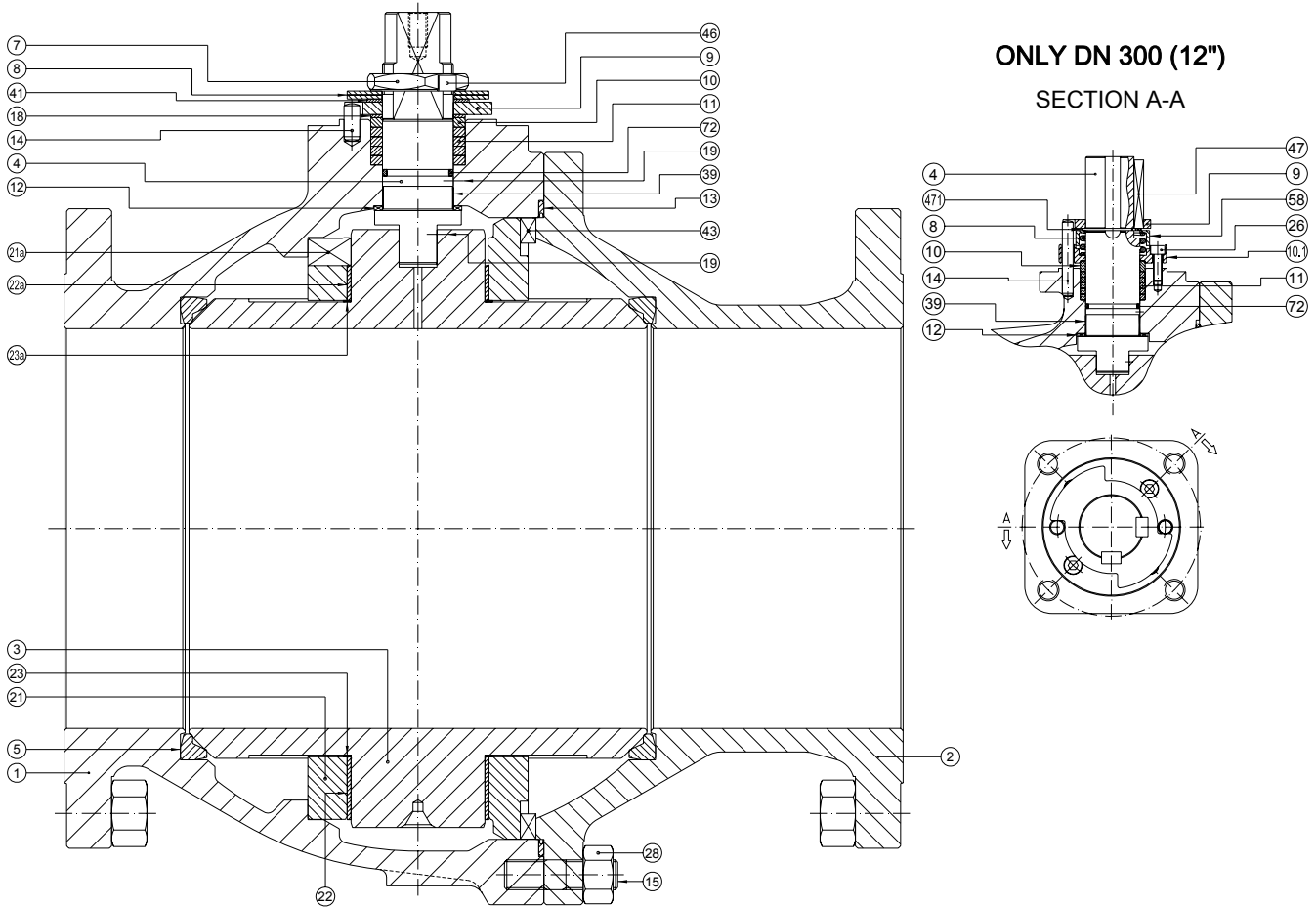


Comercial de Válvulas y Accesorios, S.A.  
Polígono Industrial Polizur, Calle Bosc Tancat, 6 Nave 2 y 3  
08290 Cerdanyola del valles ( Barcelona) – Spain Tel. 34 93 586 36 00 Fax 34 93 586 36 04  
e-mail: [info@cva.es](mailto:info@cva.es)  
URL: [www.jlx-valve.com](http://www.jlx-valve.com)

Remarks: The dimensions of this catalogue are for reference only and it can change without previous notice

# Ball Valves PN 20/50 (Class 150/300)

DN 250 - 300 (10" – 12") PN 20 (Class 150)  
 DN 200 - 300 (8" – 12") PN 50 (Class 300)  
*Parts and materials*



ITEM	Description	Material	
		AIT	IIT
1	Body	A 216 Gr. WCB (C ≤ 0,25%)	A 351 Gr. CF8M
2	Body connector	A 216 Gr. WCB (C ≤ 0,25%)	A 351 Gr. CF8M
3	Ball	A 351 Gr. CF8M	
4	Stem	A 479 Tp.316	
5	Seat ring	PTFE	PTFE
7	Gland nut	Zinc plated carbon steel	AISI 303
8	Disk spring	Carbon St.	E.N.P. Carbon St.
9	Stop plate	Carbon St.	AISI 304
10	Gland	AISI 303	AISI 316
10.1	Gland	AISI 303	AISI 316
11	Gland packing	Graphite	
12	Stem thrust seal	25% G.F. PTFE	
13	Body connector seal	AISI 316L + Graphite	
14	Stop pin	Carbon St.	Stainless St.
15	Stud	A 193 Gr. B7M	A 193 Gr. B8M
18	Thrust washer	25% G.F. PTFE	

ITEM	DESCRIPTION	MATERIAL	
		AIT	IIT
19	Antistatic device	Stainless St.	
21 / 21a	Ball Trunnion	AISI 316	
22 / 22a	Trunnion Bearing	PTFE + 50% SS	
23	Bearing	PTFE	
26	Bolt	DIN 912 8.8 Zinc plated	DIN 912 A2
28	Nut	A 194 Gr. 2HM	
39	Stem Bushing	25% G.F. PTFE*	
41	Spacer	Carbon St.	Stainless St.
43	Key	AISI 316	
46	Locking washer	AISI 304	
47	Key	AISI 316	
58	Spring Protection	Carbon St.	Stainless St.
72	O Ring	FKM	
89	Identification plate	Stainless St.	
471	Retainer	Steel	Stainless St.

\* AISI 316 + PTFE only in DN300 (12")



Comercial de Válvulas y Accesorios, S.A.  
 Polígono Industrial Polizur, Calle Bosc Tancaut, 6 Nave 2 y 3  
 08290 Cerdanyola del valles ( Barcelona) – Spain Tel. 34 93 586 36 00 Fax 34 93 586 36 04  
 e-mail: [info@cva.es](mailto:info@cva.es)  
 URL: [www.jlx-valve.com](http://www.jlx-valve.com)

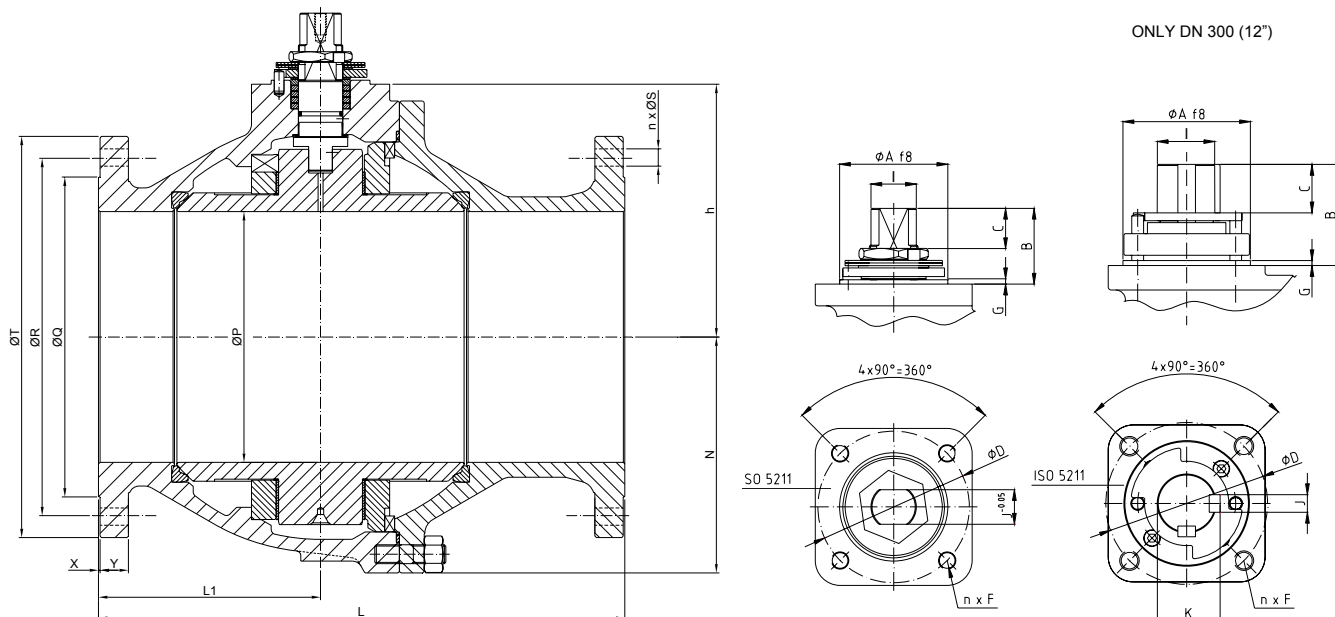
Remarks: The dimensions of this catalogue are for reference only and it can change without previous notice

# Ball Valves PN 20/50 (Class 150/300)

DN 250 - 300 (10" - 12") PN 20 (Class 150)

DN 200 - 300 (8" - 12") PN 50 (Class 300)

## Dimensions



### Serie 1515 (Class 150)

DN	ØP	L	L1	ØQ	ØR	n x ØS	ØT	X	Y	h	N	WEIGHT
250 (10")	254	533	225	324	362	12x25,4	406	1,6	28,7	256	239	237
300 (12")	305	610	270	381	431,8	12x25,4	483	1,6	30,2	297	287,5	357

(\*) Dimensions in mm and weight in kg.

### Serie 1530 (Class 300)

DN	ØP	L	L1	ØQ	ØR	n x ØS	ØT	X	Y	h	N	WEIGHT
200 (8")	203	502	239	270	330,2	12x25,4	381	1,6	39,6	233	208	189
250 (10")	254	568	225	324	387,4	16x28,4	445	1,6	46,2	256	252,5	301
300 (12")	305	648	315	381	450,9	16x31,8	521	1,6	49,2	310	300	520

(\*) Dimensions in mm and weight in kg.

### Actuator connection

DN	ISO 5211	ØA	B	C	ØD	n x F	G	I	J	K
200 (8")	F14	100	70	37	140	4xM16	4	M45x2	32	---
250 (10")	F14	100	70	37	140	4xM16	4	M45x2	32	---
300 (12")	F16	130	103	49,35	165	4xM20	5	60	18	64,2

(\*) Dimensions in mm



Comercial de Válvulas y Accesorios, S.A.  
 Polígono Industrial Polizur, Calle Bosc Tancat, 6 Nave 2 y 3  
 08290 Cerdanyola del valles ( Barcelona) - Spain Tel. 34 93 586 36 00 Fax 34 93 586 36 04  
 e-mail: [info@cva.es](mailto:info@cva.es)  
 URL: [www.jlx-valve.com](http://www.jlx-valve.com)

Remarks: The dimensions of this catalogue are for reference only and it can change without previous notice

# Ball Valves PN 20/50 (Class 150/300)

## DN 250 - 300 (10" – 12") PN 20 (Class 150)

## DN 200 - 300 (8" – 12") PN 50 (Class 300)

### General Characteristics, Torque&KV, P&T Rating

GENERAL CHARACTERISTICS	Fig.1515/1530 Series <b>SBF</b>	<b>S</b> plit Body	Trunnion <b>B</b> all	<b>F</b> ull Bore	
<b>DESIGN STANDARDS</b>					
Valves design	API 6D	ASME B16.34	BS 5351	NF E 29-470	
Body design	ASME VIII Div.1				
Shell thickness	ASME B16.34	BS 5351			
Flanges	ASME B16.5 Raised face				
Face to face dimensions	ASME B16.10 Long pattern	API 6D	EN 558-2 Series 3, 4 & 12		
Actuator mounting flange	ISO 5211				
Wetted parts materials and bolting	NACE MR.01.75				
Shell finishing quality	MSS SP 55				
Marking	API 6D	BS 5351	NF E 29-470	CE - PED	EN 19
<b>TESTS AND CERTIFICATES</b>					
Quality Assurance	ISO 9001	API Q1	CE - PED		
Fire Safe certification	BS 6755 Part 2	API 6FA	ISO 10497		
Pressure testing	API 598	BS 6755 Part 1	ISO 5208	NF E 29-203	EN 12266
Other	ISO 14001	ATEX			

#### Torque Values in Nm

VALVE SIZE	AT DIFFERENTIAL PRESSURE	
	Class 150	Class 300
	20 bar	55 bar
DN 200 (8")		1280
DN 250 (10")	1280	1480
DN 300 (12")	2000	2550

#### Kv Values in m<sup>3</sup>/h

DN 200 (8")	DN 250 (10")	DN 300 (12")
9000	15000	20800

#### Pressure-Temperature

