

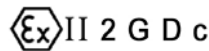
# Ball Valves PN 20/50 (Class 150/300) IITFM Construction (Low Temperature Stainless Steel)

---



## **Fig. 515/530** **"CRYOGENIC SERVICE"** **API 6D and BS 6364**

Manufacturing program:



LICENSE NO. 6D-0197

Quality & Environmental Management:



Comercial de Válvulas y Accesorios, S.A.  
Poligono Industrial Polizur, Calle Bosc Tancat, 6 Nave 2 y 3  
08290 Cerdanyola del valles ( Barcelona) – Spain Tel. 34 93 586 36 00 Fax 34 93 586 36 04  
e-mail: [info@cva.es](mailto:info@cva.es)  
URL: [www.jlx-valve.com](http://www.jlx-valve.com)

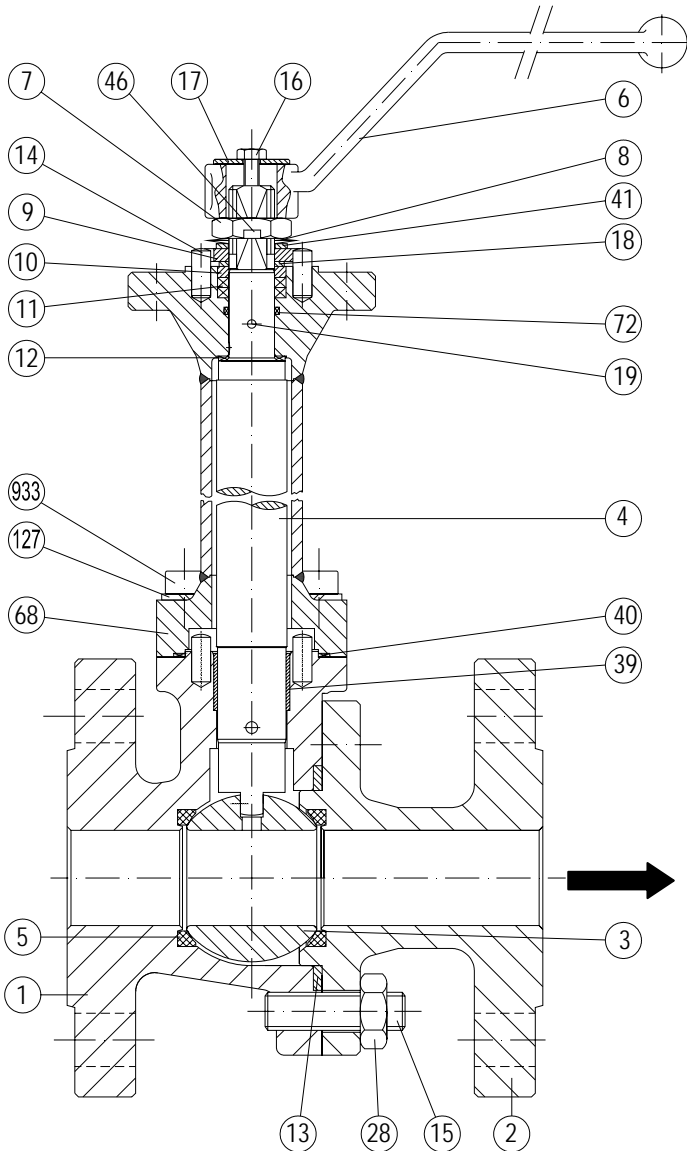
Remarks: The dimensions of this catalogue are for reference only and it can change without previous notice

# Ball Valves PN 20/50 (Class 150/300)

DN 15 - 200 (½" – 8") PN 20 (Class 150)

DN 15 - 150 (½" – 6") PN 50 (Class 300)

## Parts and materials



Item	Description	Material
1	Body	A 351 Gr. CF8M
2	Body connector	A 351 Gr. CF8M
3	Ball	S.S. Type 316
4	Stem	A 276/479 Tp. 316
5	Seat ring	TFM 1600
6	Wrench	Nodular Iron
7	Gland nut	AISI 303
8	Disk spring	E.N.P. Carbon St.
9	Stop plate	AISI 304
10	Gland	AISI 316
11	Gland packing	Graphite
12	Stem thrust seal	PTFE + 50% Stainless Steel
13	Body connector seal	AISI 316L + Graphite
14	Stop pin	Stainless St.
15	Stud ( DN 15 Bolt)	A 193 Gr. B8M
16	Bolt	DIN 933 A2
17	Washer	AISI 304
18	Thrust washer	25% G.F. + PTFE
19	Antistatic device	Stainless St.
28	Nut (DN 20 to 200)	A 194 Gr. 8M
39	Stem bushing	DI + PTFE
40	Gasket	Graphite
41	Spacer (DN 40 to 200)	AISI 304
46	Washer	AISI 304
68	Extension shell	AISI 316L
72	"O" Ring	Viton
89	Identification plate	Stainless St.
127	Washer	AISI 316
933	Bolt	A 193 Gr. B8M

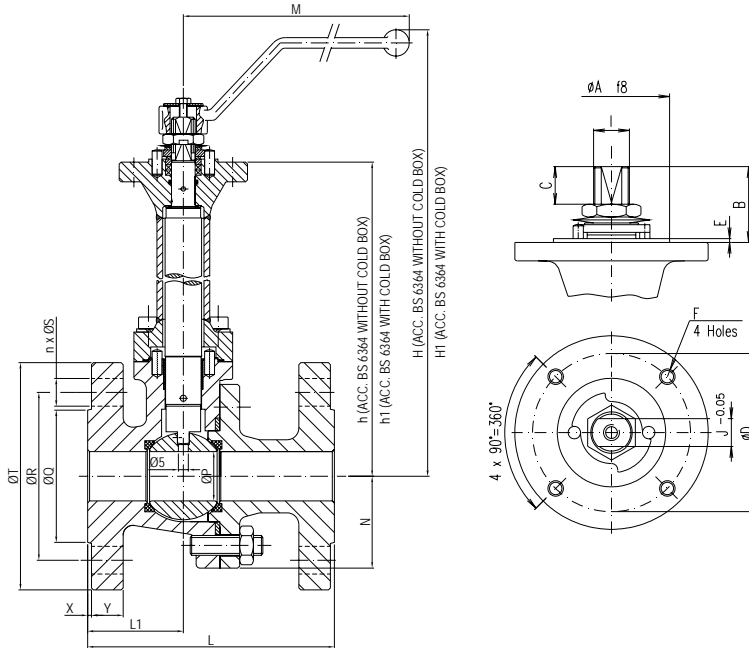


# Ball Valves PN 20/50 (Class 150/300)

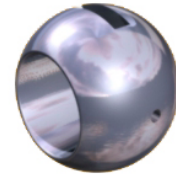
DN 15 - 200 (½" – 8") PN 20 (Class 150)

DN 15 - 150 (½" – 6") PN 50 (Class 300)

## Dimensions



CAVITY RELIEF  
DETAIL



### Series 515 (Class 150)

DN	ØP	L	L1	ØQ	ØR	n x ØS	ØT	X	Y	h	h1	N	H	H1	M	WEIGHT
15 (½")	15	108	47	34,9	60,3	4x15,9	88,9	1,6	9,5	46	---	112			166	
20 (¾")	20	117	50	42,9	69,8	4x15,9	98,4	1,6	11,1	53	---	120,8			166	
25 (1")	25	127	52	50,8	79,4	4x15,9	108	1,6	12,7	58	---	132			166	
40 (1½")	40	165	65	73	98,4	4x15,9	127	1,6	15,9	76	---	193,3			213,7	
50 (2")	50	178	68,5	92	120,6	4x19	152	1,6	17,5	83,5	---	201			213,7	
65 (2½")	65	190	75	104,8	139,7	4x19	177,8	1,6	20,6	97	---	220			350	
80 (3")	80	203	90	127	152,4	4x19	191	1,6	22,2	111	---	234,8			450	
100 (4")	100	229	102	157,2	190,5	8x19	229	1,6	22,2	133	120	226,6			465	
150 (6")	151	394	160	216	241,3	8x22,2	279,5	1,6	23,8	183	168	297			774	
200 (8")	203	457	209	270	298,4	8x22,2	343	1,6	27	233	208	308			845	

(\*) Dimensions in mm and weight in kg.

### Series 530 (Class 300)

DN	ØP	L	L1	ØQ	ØR	n x ØS	ØT	X	Y	h	h1	N	H	H1	M	WEIGHT
15 (½")	15	140	60	34,9	66,7	4x15,9	95,2	1,6	12,7	46	---	112			166	
20 (¾")	20	152	65	42,9	82,5	4x19	117,5	1,6	14,3	53	---	120,8			166	
25 (1")	25	165	70	50,8	88,9	4x19	123,8	1,6	15,9	58	---	132			166	
40 (1½")	40	190	80	73	114,3	4x22,2	155,6	1,6	19	76	---	193,3			213,7	
50 (2")	50	216	87	92	127	8x19	165,1	1,6	20,6	83,5	---	201			213,7	
80 (3")	80	283	118	127	168,3	8x22,2	210,5	1,6	26,9	111	---	234,8			450	
100 (4")	100	305	130	157,2	200	8x22,2	254	1,6	30,2	133	120	226,6			465	
150 (6")	151	403	160	216	269,9	12x22,2	317,5	1,6	35	183	168	297			774	

(\*) Dimensions in mm and weight in kg.

### Actuator connection

DN	ISO 5211	ØA	B	C	ØD	n x F	G	I	J
15 (½")	F05	35	11,5	5,7	50	4x M6	1,5	M12x1.5	9
20 (¾")	F05	35	15	7,4	50	4x M6	1,5	M12x1.5	9
25 (1")	F05	35	24	10,2	50	4x M6	1,5	M12x1.5	9
40 (1½")	F07	55	39,5	16,7	70	4xM8	3	M18x1.5	13
50 (2")	F07	55	41,5	17,6	70	4x M8	3	M18x1.5	13
65 (2½")	F07	55	44	18,1	70	4xM8	3	M22x1.5	16
80 (3")	F10	70	44,5	18,7	102	4xM10	3	M25x1.5	18
100 (4")	F10	70	56,5	28,7	102	4xM10	3	M28x1.5	20
150 (6")	F12	85	68	38,5	125	4xM12	3	M40x1.5	29
200 (8")	F14	100	70	37	140	4xM16	4	M45x2	32

(\*) Dimensions in mm



Comercial de Válvulas y Accesorios, S.A.  
 Polígono Industrial Polizur, Calle Bosc Tancat, 6 Nave 2 y 3  
 08290 Cerdanyola del valles ( Barcelona) – Spain Tel. 34 93 586 36 00 Fax 34 93 586 36 04  
 e-mail: [info@cva.es](mailto:info@cva.es)  
 URL: [www.jlx-valve.com](http://www.jlx-valve.com)

Remarks: The dimensions of this catalogue are for reference only and it can change without previous notice

# Ball Valves PN 20/50 (Class 150/300)

DN 15 - 200 (½" – 8") PN 20 (Class 150)

DN 15 - 150 (½" – 6") PN 50 (Class 300)

General Characteristics, Torque&KV, P&T Rating

GENERAL CHARACTERISTICS	Fig.515/530 Series SFF	Split Body	Floating Ball	Full Bore	
<b>DESIGN STANDARDS</b>					
Valves design	API 6D	ASME B16.34	BS 5351	NF E 29-470	
Body design	ASME VIII Div.1				
Shell thickness	ASME B16.34	BS 5351			
Flanges	ASME B16.5 Raised face				
Face to face dimensions	ASME B16.10 Long pattern	API 6D	EN 558-2 Series 3, 4 & 12		
Actuator mounting flange	ISO 5211				
Wetted parts materials and bolting	NACE MR.01.75				
Shell finishing quality	MSS SP 55				
Marking	API 6D	BS 5351	NF E 29-470	CE - PED	EN 19
<b>TESTS AND CERTIFICATES</b>					
Quality Assurance	ISO 9001	API Q1	CE - PED		
Pressure testing	API 598	BS 6755 Part 1	ISO 5208	NF E 29-203	EN 12266
Other	ISO 14001	ATEX			

## Torque Values in Nm

VALVE SIZE	AT DIFFERENTIAL PRESSURE		VALVE SIZE	AT DIFFERENTIAL PRESSURE	
	Class 150	Class 300		Class 150	Class 300
	20 bar	50 bar		20 bar	50 bar
DN 15 (½")	24	36	DN 65 (2½")	180	
DN 20 (¾")	30	48	DN 80 (3")	270	450
DN 25 (1")	45	60	DN 100 (4")	450	690
DN 40 (1½")	75	105	DN 150 (6")	750	1026
DN 50 (2")	120	165	DN 200 (8")	1050	

## Kv Values in m³/h

DN 15 (½")	DN 20 (¾")	DN 25 (1")	DN 40 (1½")	DN 50 (2")
20	40	75	170	270
DN 65 (2½")	DN 80 (3")	DN 100 (4")	DN 150 (6")	DN 200 (8")
550	1000	1650	4200	9000

## Pressure-Temperature

For A 351 Gr. CF8M only. For other materials consult ASME B16.34

