

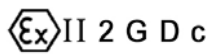
Ball Valves PN 16/40 AIT & IIT Construction (Carbon Steel and Stainless Steel)



Fig. 316/340

DIN 3357 and Fire Safe

Manufacturing program:



Quality & Environmental Management:



Comercial de Válvulas y Accesorios, S.A.
Polígono Industrial Polizur, Calle Bosc Tancat, 6 Nave 2 y 3
08290 Cerdanyola del valles (Barcelona) – Spain Tel. 34 93 586 36 00 Fax 34 93 586 36 04
e-mail: info@cva.es
URL: www.jlx-valve.com

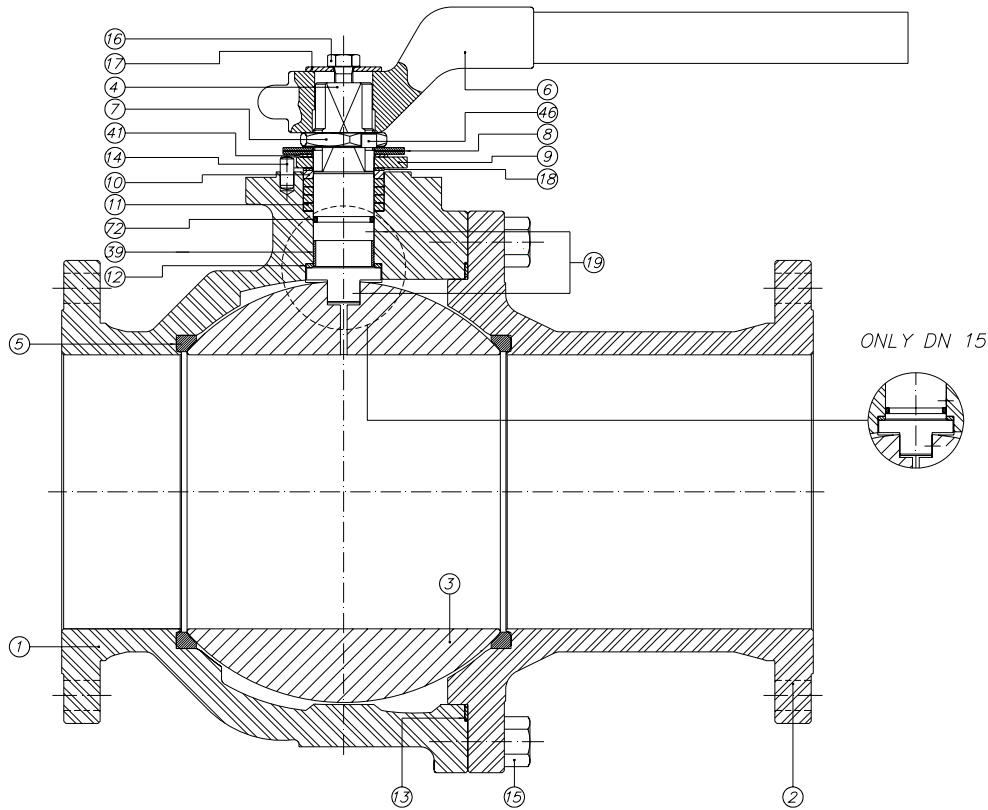
Remarks: The dimensions of this catalogue are for reference only and it can change without previous notice

Ball Valves PN 16/40

DN 65 - 100 PN 16

DN 15 - 50 PN 40

Parts and materials



Item	Description	Material	
		AT	IT
1	Body	1.0619	1.4408
2	Body connector	1.0619	1.4408
3	Ball	A 351 Gr. CF8M (DN 15 : 25 A 479 Tp.316)	
4	Stem	A 479 Tp.316	
5	Seat ring	PTFE	
6	Wrench	Nbdular Iron	
7	Gland nut	Zinc plated carbon steel	AISI 303
8	Disk spring	Carbon St.	E.N.P. Carbon St.
9	Stop plate	Carbon St.	AISI 304
10	Gland	AISI 303	AISI 316
11	Gland packing	Graphite	
12	Stem thrust seal	25% G.F. PTFE	
13	Body connector seal	AISI 316L + PTFE + Graphite	
14	Stop pin	Carbon St.	Stainless St.
15	Bolt	DIN 933 A4-70	
16	Bolt	DIN 933 A4-70	
17	Washer	Zinc plated carbon steel	AISI 304
18	Thrust washer	25% G.F. PTFE	
19	Antistatic device	Stainless St.	
39	Stem bushing	25% G.F. PTFE	
41	Spacer (DN 40 to 200)	Carbon St.	AISI 304
46	Washer	AISI 304	
72	"O" Ring	FKM	
89	Identification plate	Stainless St.	

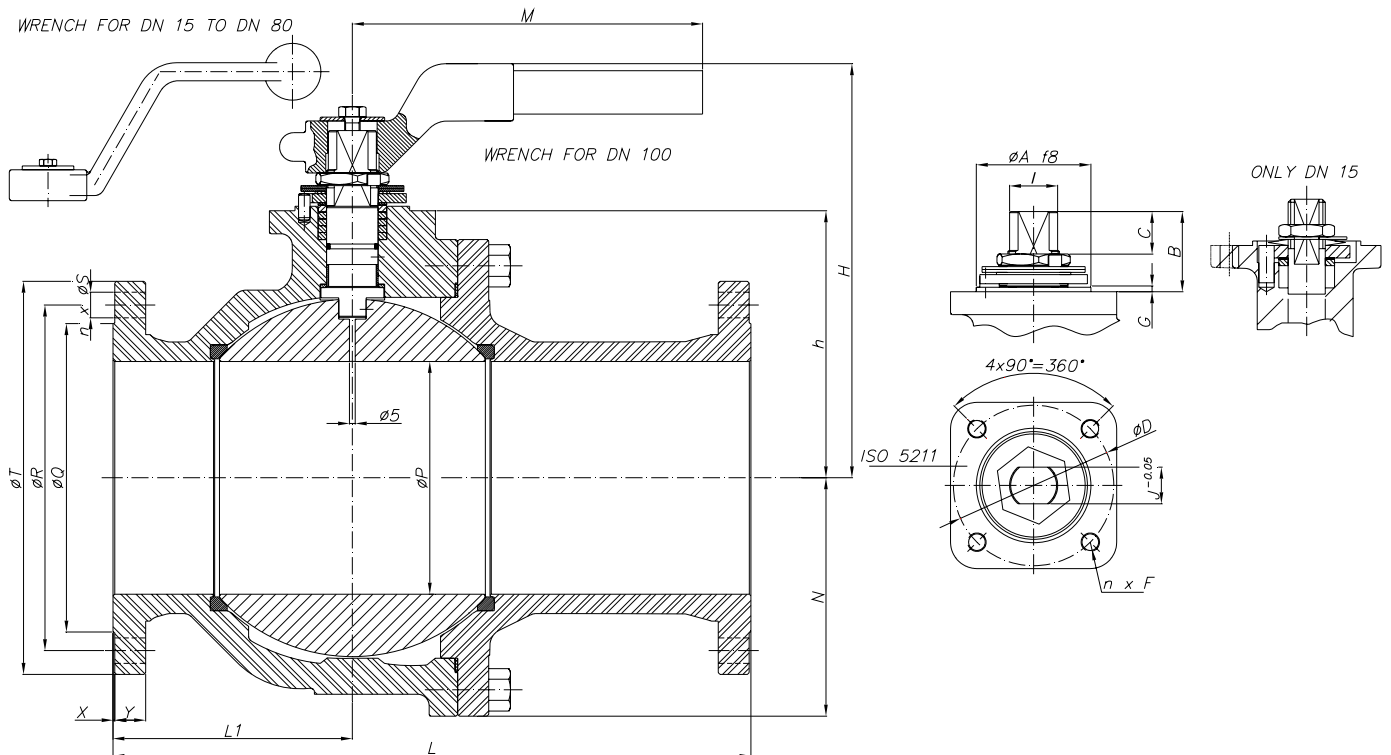


Comercial de Válvulas y Accesorios, S.A.
 Polígono Industrial Polizur, Calle Bosc Tancat, 6 Nave 2 y 3
 08290 Cerdanyola del valles (Barcelona) – Spain Tel. 34 93 586 36 00 Fax 34 93 586 36 04
 e-mail: info@cva.es
 URL: www.jlx-valve.com

Remarks: The dimensions of this catalogue are for reference only and it can change without previous notice

Ball Valves PN 16/40

DN 65 - 100 PN 16
DN 15 - 50 PN 40
Dimensions



Series 316 (PN 16)

DN	ØP	L	L1	ØQ	ØR	n x ØS	ØT	X	Y	h	N	H	M	WEIGHT
65	65	290	75	122	145	4x18	185	3	15	97	---	220,1	350	18,3
80	80	310	81,5	138	160	8x18	200	3	17	111	---	235	450	24
100	100	350	90	158	180	8x18	220	3	17	133	118	226,4	465	36

(*) Dimensions in mm and weight in kg.

Series 340 (PN 40)

DN	ØP	L	L1	ØQ	ØR	n x ØS	ØT	X	Y	h	N	H	M	WEIGHT
15	15	130	53	45	65	4x14	95	2	14	46	---	112,8	166	3
25	25	160	52	68	85	4x14	115	2	16	58	---	131,8	166	5,2
32 (**)	32	180	54	80	100	4x18	140	2	16	66,5	---	177	212	7,6
40	40	200	55	88	110	4x18	150	3	15,5	76	---	193,3	213,8	9,6
50	50	230	61	102	125	4x18	165	3	17	83,5	---	200,8	213,8	12,9

(*) Dimensions in mm and weight in kg.

(**) Under request, please consult the minimum manufacturing quantities.

Actuator connection

DN	ISO 5211	ØA	B	C	ØD	n x F	G	I	J
15	F05	35	11,5	5,7	50	4x M6	1,5	M12x1,5	9
25	F05	35	24	10,2	50	4xM6	1,5	M12x1,5	9
32 (**)	F05	35	32	12,7	50	4xM6	1,5	M16x1,5	12
40	F07	55	39,5	16,2	70	4x M8	3	M18x1,5	13
50	F07	55	41,5	18,2	70	4x M8	3	M18x1,5	13
65	F07	55	44	18,1	70	4xM8	3	M22x1,5	16
80	F10	70	44,5	18,7	102	4xM10	3	M25x1,5	18
100	F10	70	56,5	28,5	102	4xM10	3	M28x1,5	20

(*) Dimensions in mm

(**) Under request, please consult the minimum manufacturing quantities.



Comercial de Válvulas y Accesorios, S.A.
Polígono Industrial Polizur, Calle Bosc Tancat, 6 Nave 2 y 3
08290 Cerdanyola del valles (Barcelona) – Spain Tel. 34 93 586 36 00 Fax 34 93 586 36 04
e-mail: info@cva.es
URL: www.jlx-valve.com

Remarks: The dimensions of this catalogue are for reference only and it can change without previous notice

Ball Valves PN 16/40

DN 65 - 100 PN 16

DN 15 - 50 PN 40

General Characteristics, Torque&KV, P&T Rating

GENERAL CHARACTERISTICS	Fig.516/540 Series SFF	S plit Body	F loating Ball	F ull Bore
DESIGN STANDARDS				
Valves design	DIN 3357	EN 1983		
Body design	DIN 3840			
Shell thickness	BS 5351			
Flanges	DIN 2501	EN 1092-1		
Face to face dimensions	DIN 3202 F1	EN 558-1 Series 1		
Actuator mounting flange	ISO 5211	DIN 3337		
Shell finishing quality	MSS SP 55			
Marking	BS 5351	EN 19	CE - PED	
TESTS AND CERTIFICATES				
Quality Assurance	ISO 9001	CE-PED		
Fire Safe certification	BS 6755 Part 2	ISO 10497: 2004		
Pressure testing	DIN 3230	BS 6755 Part 1	EN 12266	NF E 29-203
Other	ISO 14001	ATEX		

Torque Values in Nm

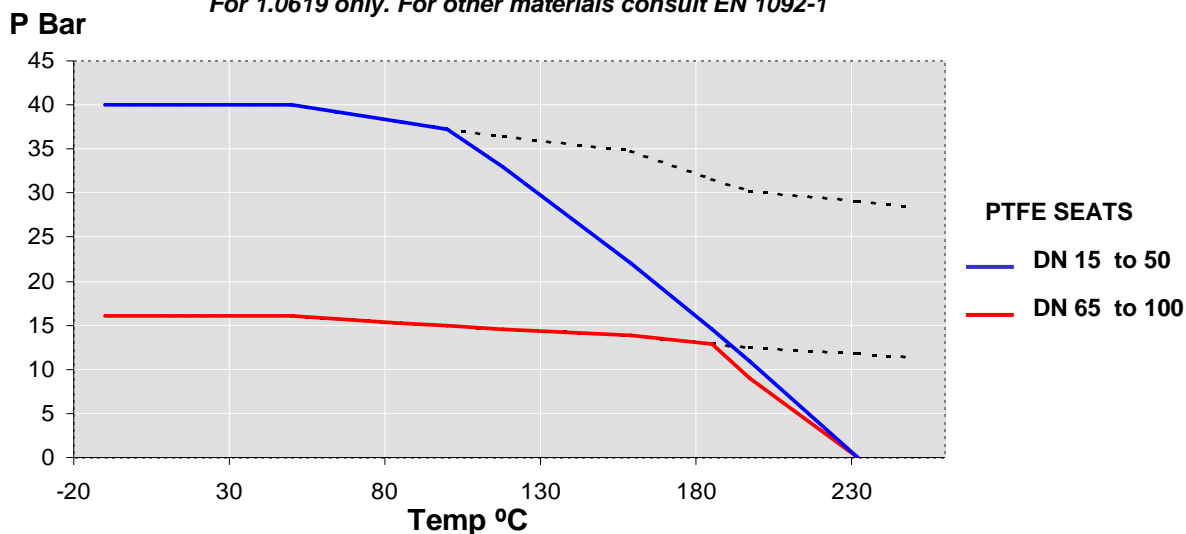
VALVE SIZE	AT DIFFERENTIAL PRESSURE		VALVE SIZE	AT DIFFERENTIAL PRESSURE	
	16 bar	40 bar		16 bar	40 bar
DN 15		10	DN 50		55
DN 25		16	DN 65	55	
DN 32		25	DN 80	85	
DN 40		30	DN 100	130	

Kv Values in m³/h

DN 15	DN 25	DN 32	DN 40
20	75	130	170
DN 50	DN 65	DN 80	DN 100
270	550	1000	1650

Pressure-Temperature

For 1.0619 only. For other materials consult EN 1092-1



Comercial de Válvulas y Accesorios, S.A.
 Polígono Industrial Polizur, Calle Bosc Tancat, 6 Nave 2 y 3
 08290 Cerdanyola del valles (Barcelona) – Spain Tel. 34 93 586 36 00 Fax 34 93 586 36 04
 e-mail: info@cva.es
 URL: www.jlx-valve.com

Remarks: The dimensions of this catalogue are for reference only and it can change without previous notice