

Flanged “Y” type Strainer
PN 10, PN 16 & PN 20 (Class 150)
DN 250 – 600 (10”- 24”)
Carbon Steel & Stainless Steel



Fig. WS2 ____

CE

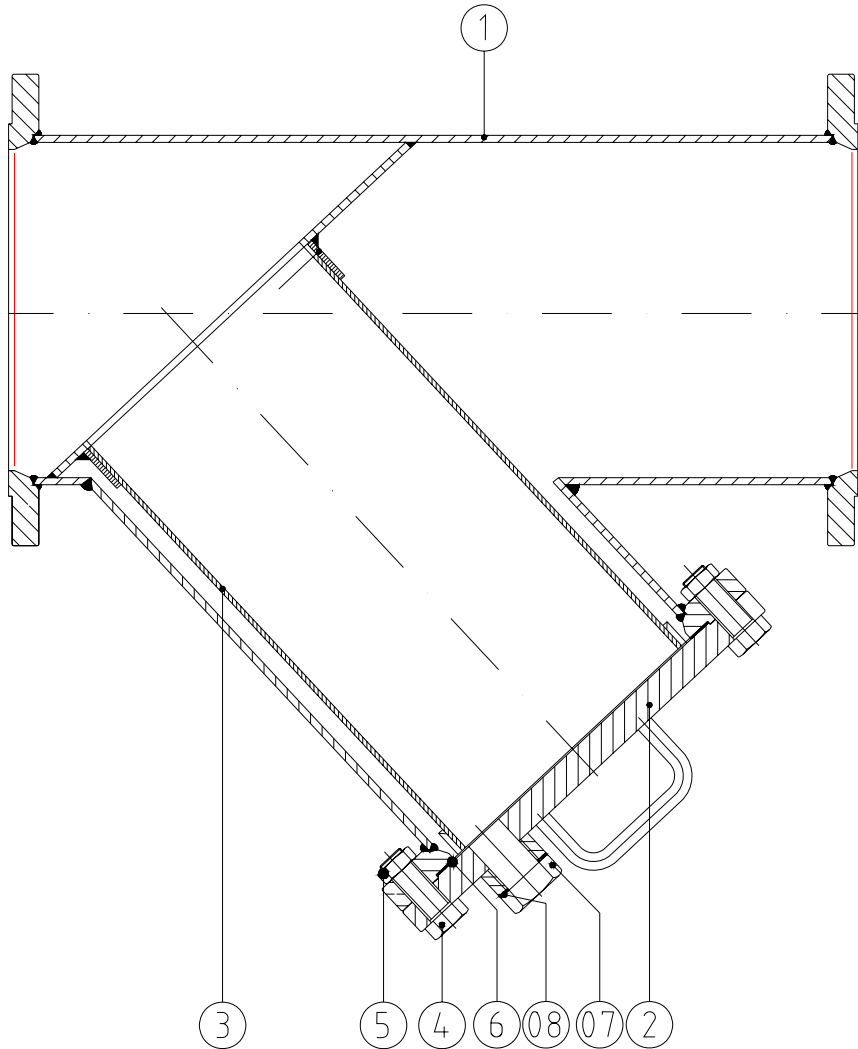


Comercial de Válvulas y Accesorios, S.A.
Polígono Industrial Polizur, Calle Bosc Tancat, 6 Nave 2 y 3
08290 Cerdanyola del valles (Barcelona) – Spain Tel. 34 93 586 36 00 Fax 34 93 586 36 04
e-mail: info@cva.es
URL: www.lx-valve.com

Remarks: The dimensions of this catalogue are for reference only and it can change without previous notice

Flanged "Y" type strainer

Parts and materials



Item	Description	Carbon Steel	Stanleis Steel
1	Body	1.0570 (St 52.3)	1.4401 (AISI 316)
2	Cap	1.0421 (St.52)	1.4401 (AISI 316)
3	Strainer screen	1.4301 (AISI 304)	
4	Bolt	8.8	A2
5	Nut	8	A2
6	Cap Gasket	Syntethic Fiber	PTFE
7	Drain plug	1.0401 (C15)	1.4401 (AISI 316)
8	Drain plug gasket	Synthetic fiber	PTFE

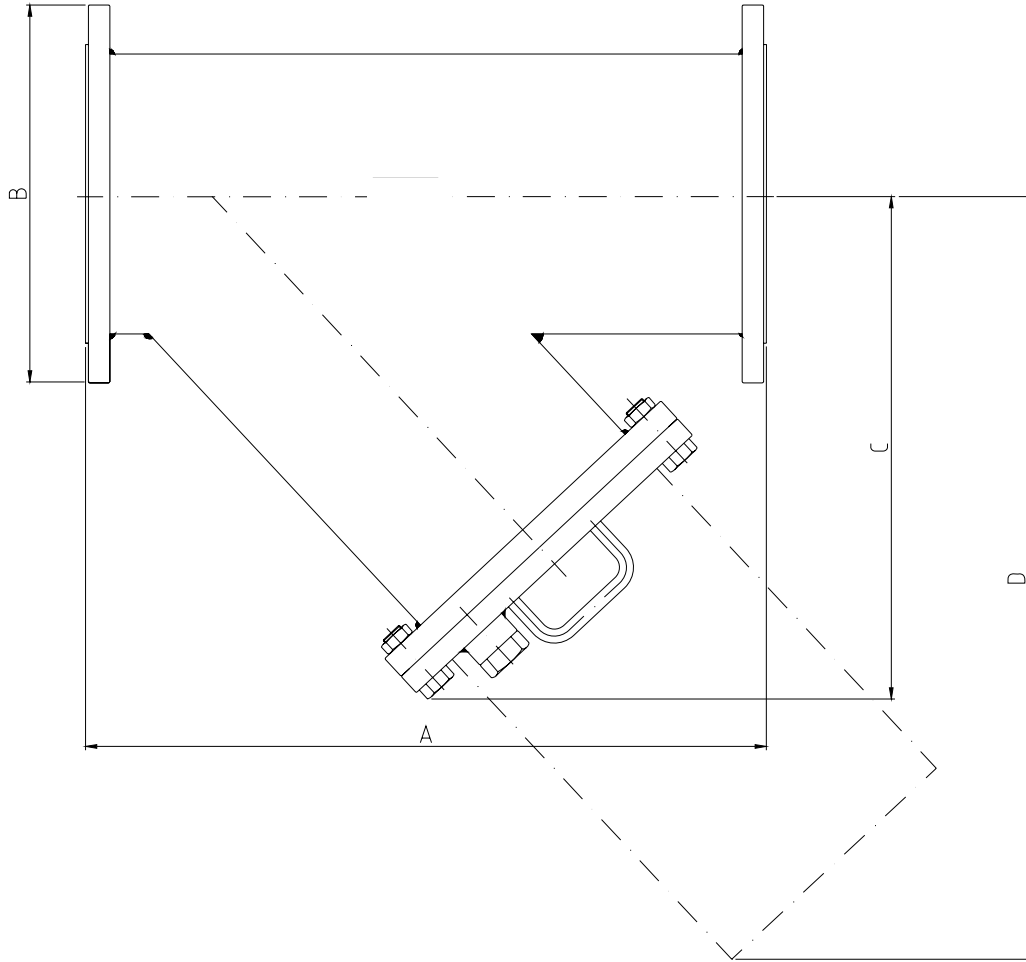


Comercial de Válvulas y Accesorios, S.A.
 Poligono Industrial Polizur, Calle Bosc Tancat, 6 Nave 2 y 3
 08290 Cerdanyola del valles (Barcelona) – Spain Tel. 34 93 586 36 00 Fax 34 93 586 36 04
 e-mail: info@cva.es
 URL: www.lx-valve.com

Remarks: The dimensions of this catalogue are for reference only and it can change without previous notice

Flanged "Y" type strainer

Dimensions



SIZE	A	ØB			C	D	Weight		
		PN 10	PN 16	PN 20 (Class 150)			PN 10	PN 16	PN 20 (Class 150)
250 (10")	730	395	405	406.4	530	920	130	190	192
300 (12")	850	445	460	482.5	630	1020	190	240	243
350 (14")	980	505	520	533.4	770	1200	250	340	342
400 (16")	1100	565	580	596.9	830	1350	330	400	403
450 (18")	1200	615	640	635	920	1500	450	490	492
500 (20")	1250	670	715	698.5	1000	1650	520	550	553
600 (24")	1450	780	840	812.8	1250	1800	670	700	702

(*) Dimensions in mm and weight in kg



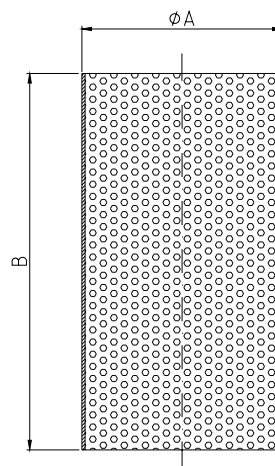
Flanged "Y" type strainer

General Characteristics

GENERAL CHARACTERISTICS	Fig. WS216CS, WS210CS, WS215CS, WS216SS, WS210SS & WS215SS
DESIGN STANDARDS	
Strainer design	AD Merkblatt TRD 301
Face to face Dimensions	EN 558-1 SERIES 1
Flanged Dimensions	EN 1092-1 & ASME B16.5 Class 150
Visual Inspection	MSS SP-55
Marking	EN 19
TESTS AND CERTIFICATES	
Pressure testing	EN 12266-1 P10

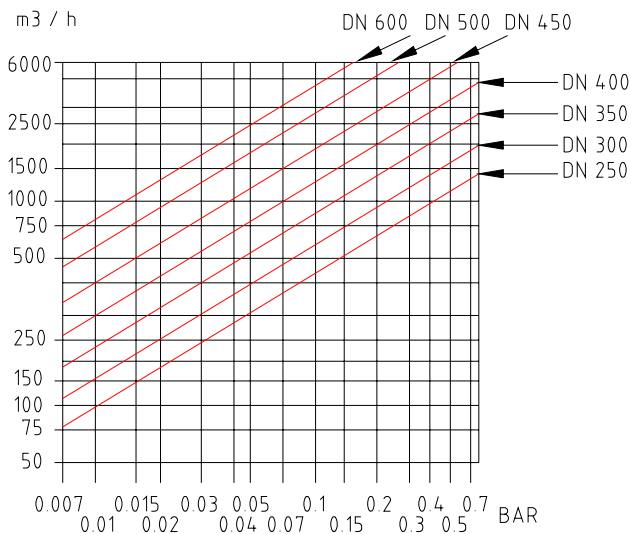
Strainer Screen Dimensions:

DN	ϕA	B	Perforation	Area
250	250	470	$\phi 1,5$	1: 1,71
300	300	580	$\phi 1,5$	1: 1,76
350	350	690	$\phi 1,5$	1: 1,79
400	400	800	$\phi 1,5$	1: 1,81
450	450	850	$\phi 1,5$	1: 1,71
500	500	890	$\phi 1,5$	1: 1,61
600	600	1000	$\phi 1,5$	1: 1,50

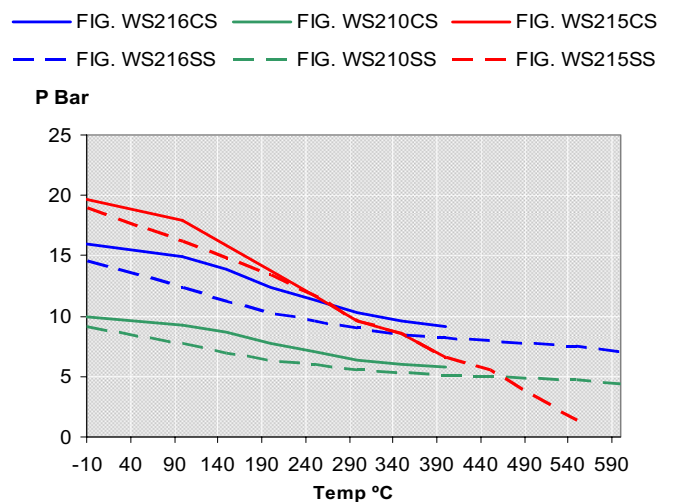


(*) Dimensions in mm

Pressure drop:



Pressure / Temperature:



Comercial de Válvulas y Accesorios, S.A.
 Polígono Industrial Polizur, Calle Bosc Tancat, 6 Nave 2 y 3
 08290 Cerdanyola del valles (Barcelona) – Spain Tel. 34 93 586 36 00 Fax 34 93 586 36 04
 e-mail: info@cva.es
 URL: www.lx-valve.com

Remarks: The dimensions of this catalogue are for reference only and it can change without previous notice